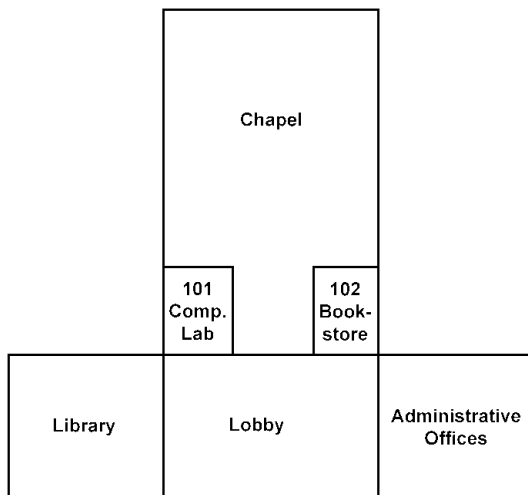


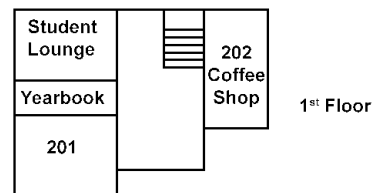
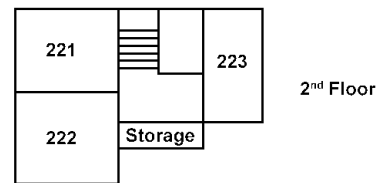
Class Schedule and Locations

First Term 2005-2006

<i>Time</i>	<i>No.</i>	<i>Course</i>	<i>Hours</i>	<i>Room</i>	<i>Professor</i>
7:00		<i>BREAKFAST</i>			
8:00	GCM 110	Composition	3	201	L. Schrader
	BNT 137	I Corinthians	3	222	L. Zimmerman
9:30		<i>CHAPEL</i>			
10:35	BGE 210	Principles of Biblical Interpretation	3	201	P. Barr
	VMU 100	Intro. to Music Theory and Sight Singing.....	3	222	K. Miller
11:45-12:30		<i>LUNCH</i>			
12:55	GCM 112	Public Speaking.....	3	201	R. Sairs
	GSS 103	Introduction to Sociology	3	222	P. Weber
2:30	GHU 111	History of Western Civilization.....	3	222	J. Showalter
	BNT 121	General Epistles.....	3	201	P. Barr
5:00		<i>SUPPER</i>			



Chapel/Library Building (100)



Classroom Building (200)