

PROGRAMS OF STUDY



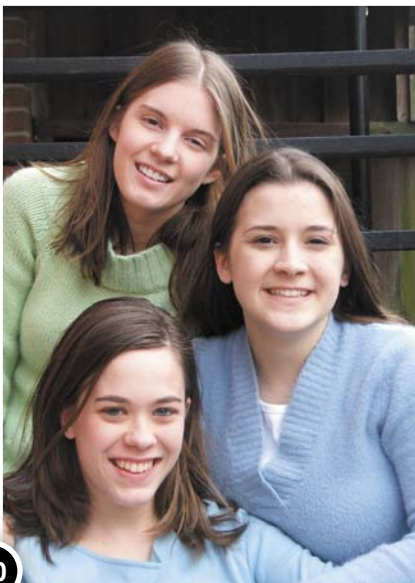
Associate Of Arts Degree In Biblical Studies

With An Area Of Concentration (60 Hours)

General Objectives for the Associate of Arts Degree in Biblical Studies

It is intended that study within this two-year program will prepare students in the following ways:

- Provide a general knowledge and basic understanding of the Bible.
- Provide a general knowledge and basic understanding of Christian theology.
- Provide tools for studying and interpreting the Bible.
- Provide an understanding of and appreciation for the theological emphasis of the Anabaptist/Mennonite tradition.
- Provide a framework for integrating biblical teaching with the rest of life.
- Provide tools to be effective in oral and written communications.



- Provide an understanding of selected areas of the social sciences and the humanities.
- Provide opportunities for the development of skills in critical thinking and valid judgment.
- Encourage the development of values consistent with biblical principles.
- Provide practical skills within the chosen area of study.
- Provide an understanding of how the chosen field of ministry contributes to the mission of the church.

To receive an Associate of Arts degree in Biblical Studies, students must successfully apply to the degree program and must complete the following courses:

Biblical/Theological Core Requirements **30 Hours**

| | |
|---|---|
| Principles of Biblical Interpretation | 3 |
| Old Testament History or Old Testament Survey..... | 3 |
| New Testament Survey..... | 3 |
| New Testament Elective | 3 |
| Theology 1 or Theology 2 or Theology 3..... | 3 |
| Spiritual Formation or Devotional Life | 3 |
| Introduction to Evangelism or Introduction to Missions | 3 |
| *Anabaptist History & Theology or Church History I or II..... | 3 |
| Christian Apologetics or Intro. to World Religions & Cults..... | 3 |
| *Christian Ethics or Peace, Justice & Simplicity | 3 |
| <i>*Students must take either Anabaptist History or Peace, Justice & Simplicity</i> | |

General Education Core Requirements **18 Hours**

All students must take the following two courses:

| | |
|----------------------|---|
| Composition | 3 |
| Public Speaking..... | 3 |

Students must take at least two of the following three courses:

| | |
|---------------------------------------|---|
| History of Western Civilization | 3 |
| Introduction to Humanities..... | 3 |
| Introduction to Philosophy | 3 |

Students must take at least one of the following two courses:

| | |
|----------------------------------|---|
| Introduction to Psychology | 3 |
| Introduction to Sociology | 3 |

One of the following courses (or one of the courses not selected from the options listed above) must be taken as a general education elective:

| | |
|-----------------------------|---|
| Marriage & the Family | 3 |
| College Algebra | 3 |

Area of Concentration **12 Hours****

To complete the requirements, select one of the seven areas of concentration on the following pages.

***The Pastoral Studies and Missions areas of concentration require an additional three hours in supervised formation. The supervised formation component includes supervision of personal, spiritual and ministry experiences.*

Associate Degree With Concentration In Bible (60 Hours)

In addition to the general objectives of the Associate of Arts degree in Biblical Studies, this program is intended to prepare students in the following ways:

- To meet more fully the objectives of the Associate of Arts degree in Biblical Studies, with an emphasis on Bible.
- To understand the spiritual disciplines needed for Christian maturity.

Bible Concentration

12 Hours

Choose four courses from Biblical General, Old Testament *or* New Testament (see page 30) 12



Associate Degree With Concentration In Theology (60 Hours)

In addition to the general objectives of the Associate of Arts degree in Biblical Studies,

this program is intended to prepare students in the following ways:

- To meet more fully the objectives of the Associate of Arts degree in Biblical Studies, with an emphasis on Theology.
- To understand the spiritual disciplines needed for Christian maturity.

Theology Concentration

12 Hours

Theology 1 or Theology 2 or Theology 3 3
 Theology 1 or Theology 2 or Theology 3 3
 Anabaptist History & Theology *or* Peace, Justice & Simplicity 3
 Church History I or Church History II 3

**Associate Degree With Concentration In
Pastoral Studies (63 Hours)**

In addition to the general objectives of the Associate of Arts degree in Biblical Studies, this program is intended to prepare students in the following ways:

- To communicate effectively in preaching and teaching.
- To understand the basic principles of church leadership and administration.
- To understand and practice the spiritual disciplines needed for Christian maturity.

Pastoral Studies 12 Hrs. + 3 Hrs. Supervised Formation

| | |
|--|---|
| Preaching in Congregational Life | 3 |
| Introduction to Counseling | 3 |
| Principles of Leadership | 3 |
| Congregational Evangelism & Church Planting or Biblical/Theological Elective (see page 30 & 31) | 3 |
| Supervised Formation | 3 |



**Associate Degree With Concentration In
Missions (63 Hours)**

In addition to the general objectives of the Associate of Arts degree in Biblical Studies, this program is intended to prepare students in the following ways:

- To understand the biblical foundations of missions.
- To understand the cultural and religious traditions of the modern world.
- To understand the early church's strategy of missions.
- To understand contemporary issues and trends in world missions.

Missions 12 Hrs. + 3 Hrs. Supervised Formation

| | |
|--|---|
| Introduction to Evangelism or Introduction to Missions | 3 |
| Current Issues In Missions | 3 |
| Congregational Evangelism & Church Planting | 3 |
| Christian Apologetics or Intro. to World Religions & Cults | 3 |
| Supervised Formation | 3 |



**Associate Degree With Concentration In
Biblical Counseling (60 Hours)**

In addition to the general objectives of the Associate of Arts degree in Biblical Studies, this program is intended to prepare students in the following ways:

- To understand the basic principles and methods of biblical counseling.
- To understand and practice the skills required for biblical counseling.
- To understand contemporary issues and trends in biblical counseling.

| Biblical Counseling Concentration | 12 Hours |
|--|-----------------|
| Introduction to Counseling..... | 3 |
| Issues & Trends In Counseling..... | 3 |
| Introduction to Sociology <i>or</i> Marriage & the Family..... | 3 |
| Child Development..... | 3 |

**Associate Degree With Concentration In
Music & Worship (60 Hours)**

In addition to the general objectives of the Associate of Arts degree in Biblical Studies, this program is intended to prepare students in the following ways:

- To understand the biblical foundation for the ministry of music in the local church.
- To understand basic music theory.
- To develop competence in music and worship leading.

| Music & Worship Concentration | 12 Hours |
|---|-----------------|
| Introduction to Music Theory & Sight Singing..... | 3 |
| Foundations of Worship..... | 3 |
| Worship Leadership..... | 1.5 |
| Choral Conducting..... | 1.5 |
| Class Voice..... | 1.5 |
| Rosedale Chorale (1 credit per term)..... | 2 |

**Associate Degree With Concentration In
General Studies (60 Hours)**

In addition to the general objectives of the Associate of Arts degree in Biblical Studies, this program is intended to maximize the number of options students have in the selection of elective courses.

General Studies Concentration 12 Hours

Choose any four courses as electives..... 12
(see pages 28-31)



One-Year Certificate In Biblical Studies (30 Hours)

The following program is designed for students who want one year of instruction at a Bible college. The program contains a combination of biblical/theological courses, general education courses and electives.

Bible Courses

| | |
|--|---|
| Old Testament | 3 |
| New Testament..... | 6 |
| Electives (General, Old Testament, New Testament)..... | 3 |
| Theology Elective | 3 |
| Theology or Apologetics Elective | 3 |
| General Education Electives | 6 |
| Electives (open)..... | 6 |

Akwachink Leadership School (3 Hours)

This program is operated by Impact North Ministries in cooperation with RBC. It is scheduled during the three weeks prior to RBC's first term and is based in the Red Lake, Ontario, area. The first two weeks consist of a canoe expedition with teaching and activities built around spiritual and character development themes. During the third week, classes at Red Lake cover important aspects of native ministries such as demography, traditional native religion, spiritual warfare, and current Native American issues. This program requires a minimum of eight and accommodates a maximum of twelve students.

DATE

August 24 – September 15, 2006

COST

\$645 plus a \$50 application fee for those not previously enrolled at RBC.



Institute of Pastoral Studies

The Institute of Pastoral Studies offers a balanced program of study for church leaders and lay persons who are not able to attend the regular terms. Students earn 4.5 credit hours per year by attending an intensive one week of classes at RBC and completing assignments on a correspondence basis. By following this sequence for three years, 16.5 credit hours can be earned (4.5 per year plus three hours of supervised ministry) to fulfill requirements for a certificate in the Institute of Pastoral Studies. Students may begin the program at the beginning of each academic year in the three-year cycle of courses.

International Collaboration

For more than two decades RBC has assisted annually with training schools in Kenya organized by Regions Beyond Ministry and Christian Church International. Both of these organizations, with offices in Thika, near Nairobi, have sent students and guest instructors to RBC, and have hosted RBC instructors during the 14-day December term of their leadership training programs. Graduates of the RBM School of Ministry receive a diploma granted by RBM in collaboration with RBC.

